

# Footwear String Lasting Threads

World of A&E



## Serging Threads:

T-60 Perma Spun® / Excell®

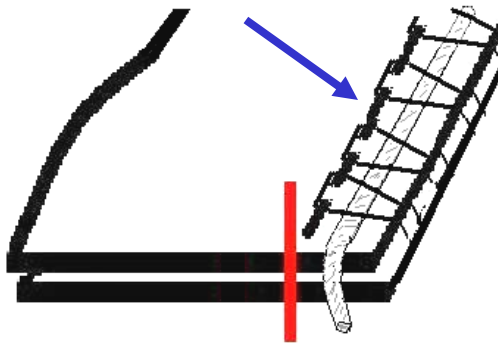
Construction: Spun Polyester

Strength (lbs) 5.2 = 2.4 kgs

T-45 Magic®

Construction: Air Entangled

Strength (lbs) 4.93 = 2.3 kgs



Global Availability - World Class Service

# Footwear String Lasting Threads

World of A&E

## Pull Cord

String inserted in Overedge Lasting Seam =

10 ply Polyester, Ludlow LP1508 #11 , DA70230 Color: 30001  
(primary item used for string lasting)

8 ply Polyester, Ludlow LP1508 #9, DA70205 Color: 30001

