

THREAD INNOVATION 3x



ANEFIL POLY® using
REPREVE®

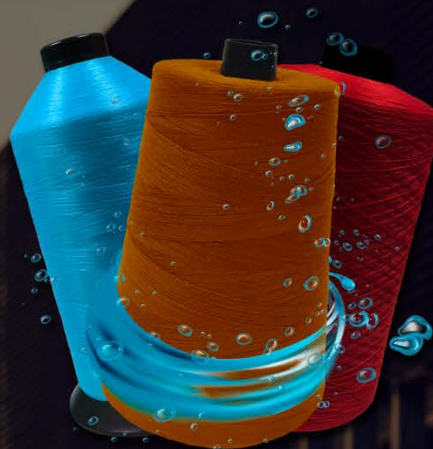
REPEL
WATER REPELLENCY FOR EVERY SEWING THREAD

**ANEFIL™
REFLECTOR**



REPEL

WATER REPELLENCY FOR
EVERY SEWING THREAD



- ENHANCED ABILITY TO REPEL WATER AND OTHER LIQUIDS
- AVAILABLE IN PERMA CORE®, D-CORE®, PERMA SPUN®, WILDCAT PLUS®, AND ALL OTHER A&E CORE, SPUN, AND TEXTURED SEWING THREADS
- DOES NOT AFFECT COLOR
- A&E PFCZERO™ APPROVED PRODUCT, CONTAINING NO PERFLUOROCARBONS
- 3RD PARTY TESTED ON SEAM
MEETS RAIN TEST METHOD: ISO 22958-2005
OR AATCC 61



PFCZERO™

AMEFIRD.COM

COMPLETE YOUR
NON-APPAREL
SUSTAINABILITY
STORY.



**SUSTAINABLE
SEWING THREADS**
REPREVE® IS MADE FROM RECYCLED,
PLASTIC DRINKING BOTTLES

Anefil Poly® using

REPREVE®



REPREVE® is a registered trademark of Unifi, Inc. in the U.S. and other regions.

amefird.com

Anefil Poly[®] using REP[®]REVE[®]

100% Recycled, Twisted Multifilament, Polyester Sewing Thread



Complete your sustainability story with a premium sewing thread designed to assist in meeting the challenge of manufacturing environmentally responsible footwear with A&E's **Anefil Poly[®] using REP[®]REVE[®]**. This 100% REP[®]REVE[®], twisted multifilament polyester sewing thread allows you the flexibility to infuse an ecologically-friendly, premium sewing thread into a wide variety of non-apparel applications.

Anefil Poly[®] using REP[®]REVE[®] provides customers with a 100% recycled thread for the sewing of footwear and other products. A&E manufactures and delivers this product anywhere you need it to be to give your next project the eco-touch it deserves.

A 100% REP[®]REVE[®] recycled, premium sewing thread, available in Bonded or Soft Finishes



FEATURES

- **100% REP[®]REVE[®] Recycled Thread**

Anefil Poly[®] using REP[®]REVE[®] is manufactured with 100% REP[®]REVE[®] recycled multifilament polyester, made from recycled plastic drinking bottles.

- **Very Good Colorfastness**

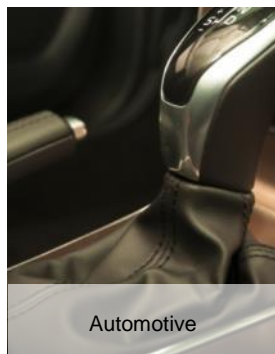
This durable thread provides very good colorfastness with good chemical resistance.

Anefil Poly[®] using REP[®]REVE[®] is available in a wide range of color.

- **Superior Sewability**

Engineered to provide excellent performance on manual and automatic multi-directional sewing machines, **Anefil Poly[®] using REP[®]REVE[®]** delivers great seam integrity, excellent strength, and abrasion resistance.

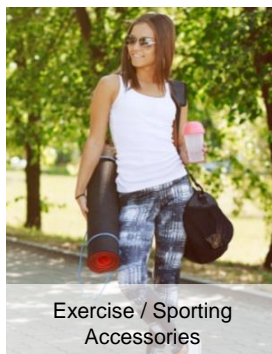
Applications include:



Automotive



Footwear



Exercise / Sporting Accessories



Sporting Goods

REP[®]REVE[®] is a registered trademark of Unifi, Inc. in the U.S. and other regions.



Anefil Poly[®] using REP[®]REVE[®]

100% Recycled, Twisted Multifilament, Polyester Sewing Thread

REP[®]REVE[®] 3rd Party SCS Certification

Nothing can be more important than the future of our planet. It's with this in mind that American & Efid has engineered a high performance recycled, 100% **REP[®]REVE[®]**, twisted multifilament, polyester sewing thread made from post-consumer plastic water bottles.

3rd party SCS certification of the raw materials ensures you can *Complete your Sustainability Story* in your next garment with fabric **AND** sewing thread using **REP[®]REVE[®]** recycled fiber from A&E and Unifi Manufacturing, Inc.



Anefil Poly[®] using Repreve[®] Sizes and Product Details*

Application	Size		Percentage of Recycled Fiber	Recommended Needle Size
	Tex	Metric		
Medium Weight	70	40	100%	110/18
Heavy Weight	90	30	100%	125/20
	135	20	100%	140/22

*Physical characteristics provided are for comparative purposes only, final determination of suitability is the sole responsibility of the user. All physical data shown is based on current averages and should not be used as minimum requirements.



A&E maintains a global commitment to sustainability at all of its worldwide operations, driven through its Ten Threads of Sustainability. For more information on A&E's Eco-Driven[®] initiatives, please visit www.amefird.com/sustainability.

Applications include:



Automotive



Footwear



Luggage and Handbags



Outdoor Products



Innovate. Create. Deliver.

A&E is the world's foremost manufacturer and distributor of premium quality industrial and consumer sewing thread, embroidery thread and technical textiles. A&E's dedication to providing its customers with the finest products and services, at the highest quality, delivered globally and steadfast commitment to superior quality and customer service make A&E the preferred thread supplier. Learn more on A&E's corporate social responsibility and environmental sustainability initiatives, comprehensive product offerings, and global locations at www.amefird.com.

REP[®]REVE[®] is a registered trademark of Unifi, Inc. in the U.S. and other regions.

Technical Product Information





BE SEEN.



ANEFIL™ REFLECTOR

REFLECTIVE SEWING AND EMBROIDERY THREADS

AMEFIRD.COM

Anefil™ Reflector

Reflective Core, Polyester Sewing and Embroidery Threads



A&E's Anefil™ Reflector is an industrial sewing thread designed and engineered for reflective visibility. Ideal for sewing a wide range of products, Anefil™ Reflector provides maximum luminescence and durability while maintaining aesthetic appearance.

Anefil™ Reflector is ideal for creating a decorative, reflective seam in coverstitch and overedge stitch applications, and is now offered in a smaller size for use in embroidery embellishment and other decorative stitch applications.

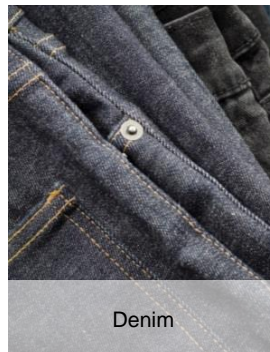
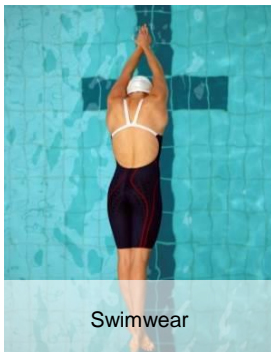
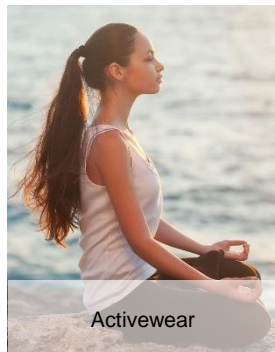
Anefil™ Reflector is used in a wide variety of categories including, activewear, workwear, safety apparel, swimwear, denim, and footwear, with multiple put-ups available for added convenience and optimal payoff.



FEATURES

- **Reflective Properties**
A reflective core bounces light back to a light source, helping to ensure visibility of decorative elements in low light environments.
- **Versatility**
Unique product construction allows for use in a wide variety of apparel and non-apparel applications.
- **Size and Functionality**
Available in both Tex 60 and 120 sizing, Anefil™ Reflector brings additional layers of functionality in sewing applications that have traditionally only incorporated tape as a reflective element

Applications include:





Anefil™ Reflector

Reflective Core, Polyester Sewing and Embroidery Threads



Anefil™ Reflector Sizes and Product Details*

Application	Size		Strength		Recommended Needle Size
	Tex	Metric	lbs.	kgs.	
Embroidery	60	50	2.05	.93	100/16
Medium Weight	120	25	4.36	1.89	125/20

*Physical characteristics provided are for comparative purposes only, final determination of suitability is the sole responsibility of the user. All physical data shown is based on current averages and should not be used as minimum requirements.



When laundered under AACTCC TM 61 Option 3A wash testing, Anefil Reflector demonstrated no visual degradation of reflectivity after 50 washes.



A&E maintains a global commitment to sustainability at all of its worldwide operations, driven through its Ten Threads of Sustainability. For more information on A&E's Eco-Driven® initiatives and current sustainability efforts, please visit www.amefird.com/sustainability.

Applications include:



Denim



Activewear



Swimwear



Workwear



Footwear



Headwear



A&E is the world's foremost manufacturer and distributor of premium quality industrial and consumer sewing thread, embroidery thread and technical textiles. A&E's dedication to providing its customers with the finest products and services, at the highest quality, delivered globally and steadfast commitment to superior quality and customer service make A&E the preferred thread supplier. Learn more on A&E's corporate social responsibility and environmental sustainability initiatives, comprehensive product offerings, and global locations at www.amefird.com.

Technical Product Information





COLORLINK

REFINED

EVERY COLOR TELLS A STORY
WHAT'S YOURS?

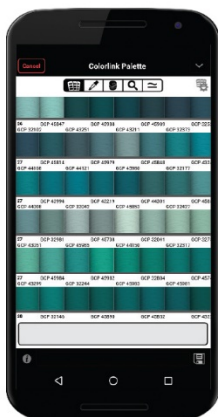
UNLOCK THE THREAD COLOR APP FOR **FREE** AT
AMEFIRD.COM/COLORLINK



COLORLINK

EVERY COLOR TELLS A STORY

THE COLORLINK THREAD COLOR APP HELPS MAKE SURE YOUR FINISHED GARMENTS ALWAYS TELL THE **RIGHT** ONE.



MY COLORS

Easily create thread color combinations that attract and inspire.

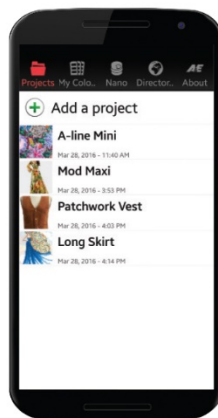
Scroll through pre-loaded palettes, search by color number or name, or let your finger find the right color with the spectrum touchpad. Once you have located a chosen color, receive up to four similar colors with one touch for fine-tuning.



VIRTUAL STITCH

Evaluate your color combinations on different fabric backgrounds.

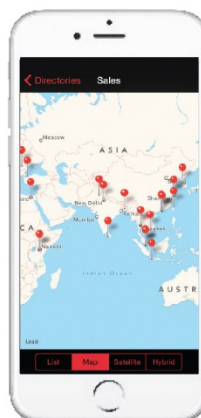
Located within My Projects, access Virtual Stitch to use your chosen colors on a variety of pre-loaded fabric backgrounds and sample types. Easily change colors and backgrounds to identify ideal color combinations.



MY PROJECTS

Create, manage, and instantly share your project with colleagues and supply chain.

The A&E Colorlink App is a collaboration tool, to help you bridge the gap between people and decisions. It's a snap to share color and project information from *My Colors* and *Virtual Stitch*. Add location information, record written and voice notes, and share via email, Twitter or Facebook.



GLOBAL RESOURCES

Explore the world of A&E, contact your reps, and request physical samples.

With the A&E Colorlink App, access to world-class thread color experts is always at your fingertips. The app can even utilize your device's GPS to locate the nearest sales and global solution support anywhere in the world. Request assistance, color information, and physical thread color samples for confirmation directly with your A&E representative.



COLORCATCH NANO

Your A&E Colorlink App has a companion to make it even more useful.

The COLORCATCH NANO is a lightweight, handheld device that instantly identifies colors on a wide variety of smooth, structured or patterned surfaces.

APP OF THE YEAR

Industry
Innovation
Technology
Award Winner*

*Awarded by E-Textile Communications - January 2017



UNLOCK THE APP FOR **FREE** AT AMEFIRD.COM/COLORLINK