



Burlington® BARRIER



Healthcare fabrics that protect.

Burlington® Performance Fabrics is committed to engineering and producing state-of-the-art healthcare fabrics that combine the highest degrees of protection, performance, comfort, and durability.

Maxima® High Density **4040-060 / J4040-060**
Maxima® is a densely constructed 62.5" (158.75 cm.) fabric for environments where there are concerns of bacteria filtration and fluid resistance. Its lightweight breathable construction also makes it a good choice for comfort. Fabric meets AAMI level 1-3, suitable for Non-Critical and Critical Area. EN13795 certified.

End uses: Surgical gowns, laundry bags, isolation gowns, patient gowns and aprons

Maxima® HD ESD **4043-060 / J4043-060**
This is the 62" (157.48 cm.) anti-static version of Maxima® High Density, engineered to offer protection in the medical arena and other environments where static control is required. Fabric meets AAMI level 1-3, suitable for Non-Critical and Critical Area. EN13795 certified.

End uses: Surgical gowns, lab coats, isolation gowns, patient gowns and aprons

XALT™ HC Level 4 Surgical Gown **4171-051**
The Face fabric is a 56.6" (144 cm.) wide version constructed with woven filament polyester and fluid repellent, laminated to a protective film barrier and light weight tricot knit. Fabric meets AAMI Level 4, suitable for Non-Critical and Critical Area. EN13795 certified.

End uses: Surgical gowns

*Certificate of Compliance "COC" is available upon request.





Burlington® BARRIER

Maxima® AT **4041-060 / J4041-060**

A 61.75" (156.85 cm.) medical fabric constructed with non-linting polyester fibers and fluid repellent finish. It is made from air textured yarns for natural hand and better comfort. The air-textured yarns offer a slip resistant surface and cotton-like aesthetics.

End uses: Lab coats, protective scrubs, patient gowns and nurse apparel



Maxima® AT ESD **4045-060 / J4045-060**

This is the anti-static version of Maxima® AT, made from air textured yarns with a carbon stripe and fluid repellent finish. The air textured yarns give a natural hand and great comfort. EN13795 certified.

End uses: Surgical wrappers, surgical drapes, table covers, lab coats, protective scrubs and surgical gown back panels



Sandwash MCS® **0529-018 / J0529-018**

A 62.5" (158.75 cm.) microfiber fabric which offers exceptional comfort in hospital scrubs. This fabric utilizes MCS® Moisture Control System technology for permanent moisture wicking and added comfort.

End use: Scrubs



*Certificate of Compliance "COC" is available upon request.



Burlington® BARRIER

Minimal Protection



Low Protection



Moderate Protection



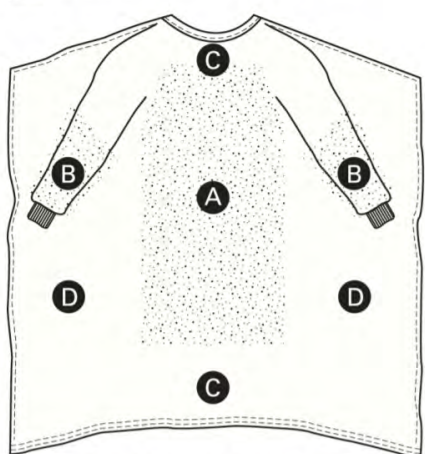
High Protection



ANSI / AAMI PB70 Barrier Performance	Test Method	Test Definition	Requirement
Level 1	Water Resistance: Impact Penetration AATCC 42	AATCC 42 Measures the resistance of fabrics to the liquid penetration of water by impact.	Water Impact \leq 4.5 g
Level 2	Water Resistance: Impact Penetration AATCC 42 Water Resistance: Hydrostatic Pressure AATCC 127	AATCC 42 Measures the resistance of fabrics to the liquid penetration of water by impact. AATCC 127 Measures the resistance of fabrics to the liquid penetration of water by impact under constant and increasing hydrostatic pressure.	Spray impact \leq 1.0 g Hydrostatic Pressure \geq 20 cm
Level 3	Water Resistance: Impact Penetration AATCC 42 Water Resistance: Hydrostatic Pressure AATCC 127	AATCC 42 Measures the resistance of fabrics to the liquid penetration of water by impact. AATCC 127 Measures the resistance of fabrics to the liquid penetration of water by impact under constant and increasing hydrostatic pressure.	Spray impact \leq 1.0 g Hydrostatic Pressure \geq 50 cm
Level 4	Viral Penetration ASTM F1671	ASTM F1671 Measures the resistance of fabrics to bloodborne pathogens using viral penetration at 2psi and ambient pressure.	Total impervious

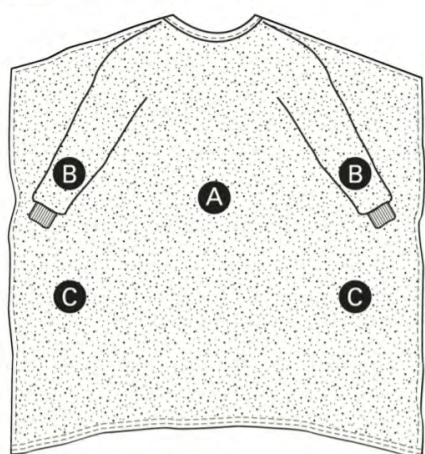
ANSI / AAMI PB70 Critical Zones for Gowns

Critical zone



Surgical gown

Critical zone



Isolation gown

Adapted with permission from ANSI/AAMI PB70:2012, "Liquid barrier performance and classification of protective apparel and drapes intended for use in health care facilities"

A-D Explanation:

NOTE 1 — The entire front of the gown (areas A, B, and C) is required to have a barrier performance of at least Level 1.

NOTE 2 — The critical zone comprises at least areas A and B. The classification of the surgical gown is based on the lowerperforming component of the two.

NOTE 3 — The back of the surgical gown (area D) may be nonprotective.



A&E Gütermann Thread Products



Global sewing threads for medical personal protective equipment

A&E Gütermann has supported the global health care industry with the world's finest, trusted sewing threads and premium specialty yarns for well over a century.

Commonly Used Thread Products

Wildcat® Plus | *High Performance, Textured Polyester*

Ideal for seaming and serging knit and woven fabrics, this sewing thread provides superior seam elasticity and seam strength delivering across the board performance and longer lasting seams.

Perma Core® | *Polyester-Wrapped, Polyester Core*

Perma Core® is a premium core spun sewing thread manufactured with a continuous filament polyester core and polyester staple wrap. An icon in the textiles industry, Perma Core® maximizes seam quality while minimizing sewing problems. It's core spun construction delivers higher seam strength and sewing performance allowing for the use of smaller thread sizes, providing excellent durability through multiple launderings.

Anefil Poly® | *Twisted Multifilament Polyester*

A&E's Anefil Poly® is a twisted multifilament polyester sewing thread ideal for sewing a wide range of products. In addition to good overall performance and excellent seam strength, the twisted multifilament construction of this sewing thread provides for superior sewability.



Recommended Product/Size by Application

● Surgical Disposable Products

Gowns / Coveralls / Caps / Footwear
Wildcat® Plus | TEX 18/24

● Surgical Masks

Perma Core® | TEX 24
Wildcat® Plus | TEX 18

● Scrubs

Perma Core® | TEX 24/30/40
Wildcat® Plus | TEX 18

● Hospital Sheets

Perma Core® | TEX 24/30

● Hospital Towels

Perma Core® | TEX 24

● Medical Gowns

Reusable
Perma Core® | TEX 24/30
Wildcat® Plus | TEX 24

● Clean Room Garments

Anefil Poly® | TEX 35/45
No silicone added

● Protective Coverall Suits

Reusable
Perma Core® | TEX 24/30/40
Wildcat® Plus | TEX 24