



WeatherMAX[®]

WEATHER AND UV RESISTANT SEWING THREAD

We are proud to introduce WeatherMAX[®] sewing thread by A&E. This durable, professional grade sewing thread provides the ultimate in outdoor weather and ultraviolet light resistance, preserving thread strength and color. A&E's WeatherMAX[®] sewing thread combines WeatherMAX[®]'s patented outdoor performance yarn technology with A&E's expertise in producing highly-engineered, premium outdoor sewing threads.

Conventional polyester sewing threads with UV inhibitors lose 30% of its color through fading. A&E's WeatherMAX[®] sewing thread features ColorTite[®] technology, delivering long lasting color that does not fade or transfer. A&E's WeatherMAX[®] sewing thread also maintains higher strength over conventional polyester sewing threads with UV inhibitors that lose approximately 40% more strength over time.

A&E's WeatherMAX[®] sewing thread provides quality other thread products can not match, delivering a superior sewing thread ideal for the most demanding of outdoor applications.

Bobbins are available to complete your sewing package.



BENEFITS

UV AND WEATHER RESISTANT TECHNOLOGY — Features ultraviolet light resistance technology that reduces strength degradation over traditional filament polyesters, while delivering additional water and weather repellency.

HIGH PERFORMANCE SEAMS — Delivers outstanding sewing efficiency with fewer sewing interruptions and excellent ply security for high performance seams. Other polyester sewing threads with UV inhibitors lose 40% more strength versus WeatherMAX[®] sewing thread.

BEAUTIFUL COLOR, LONGER — Offered in official fabric colors, WeatherMAX[®] thread features ColorTite[®] technology. 100% pigment, solution dyed, this product's color does not fade or transfer and is bleach cleanable.

HIGHLIGHTED USES

- Outdoor Applications
- Marine
- Awnings
- Shade Sails
- Patio Furnishings
- Pool Coverings
- Tents
- Umbrellas



WEATHERMAX® SEWING THREAD

PRODUCT INFORMATION*

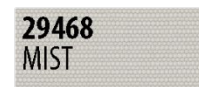
Application	Size		Strength		Recommended Needle Size
	Tex	Metric	lbs.	kgs.	
Heavy Weight	135	20	12	5.45	140/22

*Physical characteristics provided are for comparative purposes only, final determination of suitability is the sole responsibility of the user. All physical data shown is based on current averages and should not be used as minimum requirements.



WeatherMAX® outdoor sewing thread by A&E utilizes advanced, ColorTite® technology, ensuring its superior, long lasting colors do not transfer in the harshest of outdoor environments, while maintaining brilliant shine.

AVAILABLE IN 16 POPULAR WEATHERMAX® 80 FABRIC COLORS



ABOUT WEATHERMAX® FABRIC

Super high strength and durability combine with long-term color retention to deliver a truly versatile outdoor fabric for a variety of applications. WeatherMAX® is the industry's most balanced and cost-effective fabric available for marine covers and tops, awnings, or other outdoor applications requiring outstanding durability, higher water repellence and excellent breathability.

More information on WeatherMAX® fabric and available color offerings at WWW.WEATHERMAX.COM.

WHY CHOOSE A&E?

QUALITY THREAD PRODUCTS SINCE 1891 — A&E is the world's foremost manufacturer and distributor of premium quality industrial and consumer sewing thread, embroidery thread and technical textiles. A&E's dedication to providing its customers with the finest products and services, at the highest quality, delivered globally and steadfast commitment to superior quality and customer service make A&E the preferred thread supplier. Learn more on A&E's corporate social responsibility and environmental sustainability initiatives, comprehensive product offerings, and global locations at WWW.AMEFIRD.COM.

A&E operates as a distinguished brand of Elevate Textiles. Elevate's brands include: American & Efir, Burlington, Cone Denim, Gütermann and Safety Components. More information is available at WWW.ELEVATETEXTILES.COM.

ECO-DRIVEN®

A&E's Eco-Driven mark is a symbol of A&E's commitment to sustainability and its continued investment in innovative technologies that help reduce the environmental footprint of A&E operations globally.

Together with parent company, Elevate Textiles, all Elevate brands support 2025 commitments on responsibly sourced fibers, reduced water consumption, and reduced greenhouse gas targets.