

**SUPER BRITE®
POLY FLOSS**

Our premium Brand **By Robison - Anton®** 



TRILOBAL
POLYESTER
TWISTED
MULTIFILAMENT

World of A&E

Super Brite Poly FLOSS

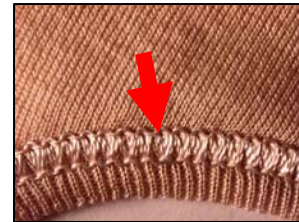
Application: Not an embroidery thread. For merrowing edges of patches and for providing a distinctive topstitching appearance.

Common Applications

- Emblems & Labels
- Activewear & Casual
- Home Fashions
- Cap & Hats



ISO505 Overedge Thread also referred to a Merrow Stitch



ISO602 Stitch Cover Thread

- Made from High Tenacity Tri-Lobal Polyester
- Brilliant Colors with a High Sheen Appearance
- Superior Color Fastness & Abrasion Resistance
- Already matched to Pantone® Licensed Colors

Global Availability - World Class Service

www.amefird.com



**SUPER BRITE®
POLY FLOSS**



TRILOBAL
POLYESTER
TWISTED
MULTIFILAMENT

World of A&E

www.amefird.com

Our premium Brand **By Robison - Anton®**

Super Brite Poly® FLOSS

Application: Not an embroidery thread. For merrowing edges of patches and for providing a distinctive topstitching appearance.



**Polyester Floss
Color Card**



Super Brite® Poly Floss

- 300d X 4 Yarn* (approx. Tex 135)
- Brilliant Colors with a High Sheen Appearance
- Made from High Tenacity Tri-Lobal Polyester
- Good Color Fastness & Abrasion Resistance
- 37 Global Colors

* Other yarn size available



24 American Street

PO Box 507, Mt. Holly, NC 28120

Tel: 877-200-7070 Fax: 800 261-8498

Email: SalesRA@amefird.com

Web: www.amefird.com /www.robison-anton.com

