



# ANECOT PLUS<sup>®</sup> RFD

READY-FOR-DYE, LONG STAPLE, SPUN COTTON SEWING THREAD



THREAD TO MAKE YOUR NEXT  
GARMENT **EXPLODE WITH COLOR.**

GARMENT OVERDYE | CASUAL WEAR | DENIM | CHILDREN'S WEAR

# ANECOT PLUS® RFD

READY-FOR-DYE, LONG STAPLE, SPUN COTTON SEWING THREAD



A&E's Anecot Plus® RFD is a 100% long staple, spun cotton sewing thread. Available in its natural color, this ready-for-dye variant of Anecot Plus® is twisted and finished. Manufactured with 100% cotton, Anecot Plus® RFD is ideal for use in denim and casual garment overdyed operations. Due to its natural cotton fiber, this thread will not melt and is not affected by needle heat or pressing. Anecot Plus® RFD is offered in soft, gassed, and mercerized and gassed.

## EXCELLENT FOR OVERDYE

An ideal product for garment overdyed, this thread has very good colorfastness.

## GOOD TENSILE STRENGTH

This ring spun cotton thread provides higher tensile strength versus short staple cotton thread products of the same type and size.

## EXCELLENT SEWING PERFORMANCE

This thread is engineered to provide an optimum sewing performance on manual and automatic, multidirectional sewing machines.

**GARMENT OVERDYE • CASUAL WEAR • CHILDREN'S WEAR • DENIM AND JEANSWEAR • WOMENSWEAR  
• TROUSERS AND PANTS • SHIRTS AND TOPS • DRESSES AND SKIRTS**



CUSTOMERSERVICE@AMEFIRD.COM | AMEFIRD.COM | ELEVATETEXTILES.COM

# ANECOT PLUS® RFD



READY-FOR-DYE, LONG STAPLE, SPUN COTTON SEWING THREAD

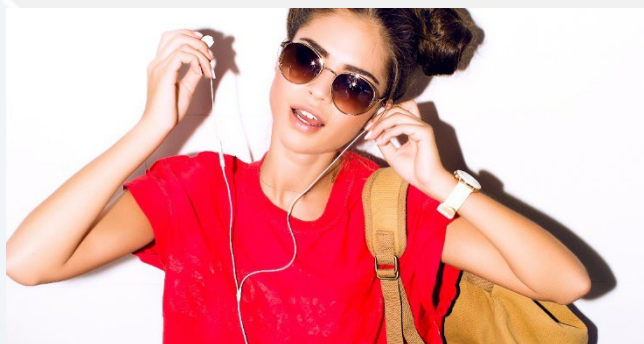
## PRODUCT INFORMATION\*

Application	Size Tex	Ticket	Strength lbs.	cN	Recommended Needle Size
Light Weight	30	90	1.78	792	80/12
Medium Weight	40	75	2.42	1,076	90/14
	60	50	3.51	1,561	100/16
Heavy Weight	80	36	4.88	2,171	120/19
	105	27	6.83	3,038	125/20

\*Physical characteristics provided are for comparative purposes only. Final determination of suitability is the sole responsibility of the user. All physical data shown is based on current averages and should not be used as minimum requirements.

## HIGHLIGHTED THREAD PRODUCTS

- Anecot® — Short Staple, Spun Cotton
- Anecot Plus® — Long Staple, Spun Cotton
- Anecot Plus® RFD — Ready-for-Dye, Long Staple, Spun Cotton
- Anecot® Organic — Organic, Long Staple, Spun Cotton



## ECO•DRIVEN®

A&E's Eco-Driven mark is a symbol of our commitment to sustainability and continued investment in innovative technologies that help reduce our global operations environmental footprint. Under Elevate Textiles, A&E and all supporting brands contribute to unified commitments of responsibly sourced fibers, reduced water consumption, and reduced greenhouse gas targets.

## WHY CHOOSE A&E?

**QUALITY THREAD PRODUCTS SINCE 1891** — A&E is the world's foremost manufacturer and distributor of premium quality industrial and consumer sewing thread, embroidery thread and technical textiles. We provide our customers with the finest products and services, at the highest quality, delivered globally. Our steadfast commitment to superior quality and customer service make A&E the preferred thread supplier. Learn more on A&E's corporate social responsibility and environmental sustainability initiatives, comprehensive product offerings, and global locations at [WWW.AMEFIRD.COM](http://WWW.AMEFIRD.COM).

[CUSTOMERSERVICE@AMEFIRD.COM](mailto:CUSTOMERSERVICE@AMEFIRD.COM) | [AMEFIRD.COM](http://AMEFIRD.COM) | [ELEVATETEXTILES.COM](http://ELEVATETEXTILES.COM)



## **ANECOT PLUS® RFD**

READY-FOR-DYE, LONG STAPLE, SPUN COTTON SEWING THREAD